
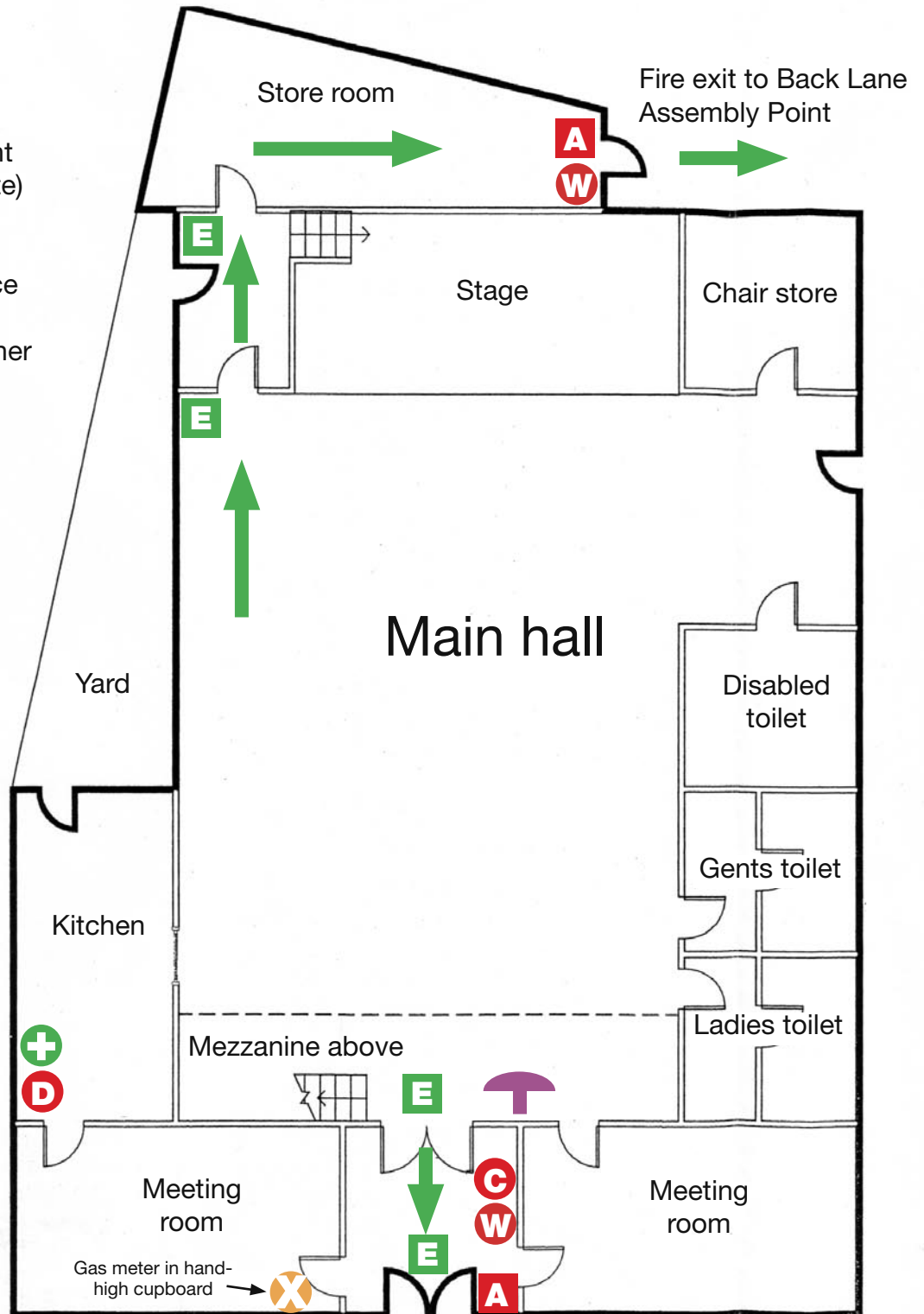


IN THE EVENT OF A FIRE

In case of Fire shout FIRE and leave by the nearest exit, operating the alarm if not already sounding. Phone the fire brigade by dialling 999 from a mobile phone or from the public call box to the right of the street door. Do not loiter to collect coats or personal belongings. Do not re-enter the hall until a fire officer has given their approval.

Key

- E** Exit sign (illuminated)
- A** Manual fire alarm point (Break glass to operate)
-  Fire alarm bell and visual warning device
- D** Dry powder extinguisher
- W** Water extinguisher
- C** CO₂ extinguisher
- +** First aid box and accident book
- X** Gas meter with cutoff lever



MAIN ENTRANCE FROM NORWICH ROAD